



Mark Oliphant
College

Primary Years

NEWSLETTER

TERM 1, WEEK 5

4 MARCH 2016



“Learning is not attained by chance, it must be sought for with ardor and attended to with diligence.”

- Abigail Adams

KEY DATES...

Adelaide Cup Holiday
- Monday 14 March

Good Friday Public Holiday
- Friday 25th March

Easter Monday Public Holiday
- Monday 28th March

Last day of term for students
- Thursday 14th April

Pupil Free Day
- Friday 15th April

Start Term 2
- Monday 2nd May

A NOTE FROM PRIMARY YEARS LEADERSHIP

Camp Australia runs a wonderful Out of School Hours Care Program here at MOC, based in the Children’s Centre. It operates from 6:30 in the morning until the school gates open at 8:30. OSHC runs after school from 3:00 until 6:00. OSHC is also offered in the school holidays and on Pupil Free Days. **Please note the next Pupil Free Day is on April 15.** If you want to make a booking or find out more about OSHC ring 1300 105 343 or go online at www.campastralia.com.au.

The MOC school gates open at 8:30 in the morning. Please do not drop your children off at school prior to 8:30 as there is no supervision for children who are not attending OSHC. The car parks on both Douglas Drive and Newton Boulevard can become very congested and unsafe for children who are playing unattended.

Our focus on attendance, in partnership with parents and families, has made a huge difference over the last year and a half. Thank you for making the effort to get your children to school every day – and on time every day! When children arrive late, they are asked to enter school through the front office and sign in. This allows us to record who arrived late even if they have already been marked absent through the class role. When children sign in at the computer in the front office they are asked to choose a reason for being late. These reasons include: *Family/Social, Illness, Home Study, Leave/Return* and *Not approved by Parent/Guardian*. The very first one on the list is *Not Approved by Parent/Guardian*, which is the least likely reason for children to be away. If you are supporting your child to sign in, please help them choose the right reason! If you are unsure, the friendly SSOs at the front desk will be delighted to help.

Kim Cooper
Executive Leader B-6



Government
of South Australia
Department for Education
and Child Development

Ph. (08) 8209 1600
www.moc.sa.edu.au | info@moc.sa.edu.au
99 Douglas Drive, Munno Para SA 5115

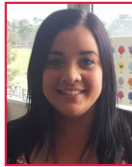
THE UNIFORM SHOP

OPENING HOURS

Monday 2.30 - 4.30pm
Wednesday 8.30 - 10am
Thursday 8.30 - 10am

MEET THE STAFF

Anella DiBiase
- Year 4



This is my first year teaching at MOC. I have been teaching for five years

now and am passionate about creativity, maths and performing arts. So far I have thoroughly enjoyed my time at MOC and am very excited to see what's in store for the rest of the year.

My interests out of school include singing and playing with my dog Bobby.

PRIMARY YEARS TEAM

Kim Cooper
Executive Leader B-6
E: kim.cooper@moc.sa.edu.au

Ella Ailmore
Senior Leader - Head of Primary Years

Barry Solomon
Leader - Learning and Wellbeing

Jacki Magin
Leader - Learning and Explicit Teaching

Sally Lowe
Leader - Learning and Mathematics

 www.facebook.com/MOCPY

RED AND GREEN CHOICES

I am impressed at the efforts Primary Years students are continuing to place into their learning and behaviour!

Your children may have come home talking about 'Red and Green Choices.' We use this as our language to label behaviours at school. Green being for good behaviour choices and red being for bad behaviour choices. So far it has been pleasing to see many students having days full of Green Choices! Some examples are:

- Listening to and following instructions
- Talking to others respectfully
- Having a go at learning



This language is taught from Reception through to Year 6 and may be of benefit to use at home. Please get in contact with your child's teacher or a member of the Leadership Team if you would like any resources to support you in using this language.

Ella Ailmore, Senior Leader - Head of Primary Years

UPDATING CONTACT DETAILS

Dear Parents & Caregivers,

Please advise the school ASAP if any of your contact details change.

Your child's teacher or other school staff may need to speak to you about your child and their wellbeing for a range of important reasons such as:

- Their progress and achievement in learning
- Unexplained absences
- Medical issues
- Review of NEPs
- Friendship or social issues
- To tell you about the fantastic learning they are doing!

It is especially important for us to be able to contact you immediately in case of a medical emergency.

If you have a preferred method of communication such as text, email or a written note please inform your child's teacher.

Thank you in anticipation of your co-operation.

Barry Solomon, Leader - Learning and Wellbeing

**PLEASE READ:
IMPORTANT
MESSAGE**



WHAT'S THE BUZZ IN 10.5



This year the stars of 10.5 have hit the ground running.

We welcomed five new students to our class community and they have all settled in well. We've jumped straight into learning and have really been working hard to develop Sensational Scintillating Superb Sentences using literary devices, adverbs and adjectives to make our words dance off the page and create illustrations in the minds of our readers. We're also developing our skills as editors and reading back our writing to make sure it makes sense and then publishing it using i-movie and keynote.

Lisa Glanville

URBAN YOUTH SERVICE

THE PIER at THE RISE Elizabeth Downs

YOUTH DROP-IN EVERY TUESDAY AT 3.30-5PM

- AGES 10 - 25
- VIDEO GAMES ON THE BIG SCREEN
- COOKING AND FREE FOOD
- TABLE TENNIS AND 8-BALL
- ART AND CRAFT ACTIVITIES

• CHILL OUT AREA
ELIZABETH RISE COMMUNITY CENTRE

Shop 7 / 26 Hamblynn Road, ELIZABETH DOWNS



THIS INITIATIVE IS FUNDED BY THE DEPARTMENT OF COMMUNITY & SOCIAL INCLUSION IN PARTNERSHIP WITH PLAYFORD CITY COUNCIL